



NEREIDA

CONTAINERS

Updated to last version:
SOLAS & IMO
Verified Gross Mass (VGM)

NEREIDA CONTAINERS



MOVEMENTS WITHIN PORT

NEREIDA Containers calculates the number of movements needed by each crane to estimate the total operation time.



OPTIMAL PLANNING AND DISTRIBUTION

Quick, comfortable and accurate work system that will entail an increase of the productivity of the company with a decrease of the human resource costs.

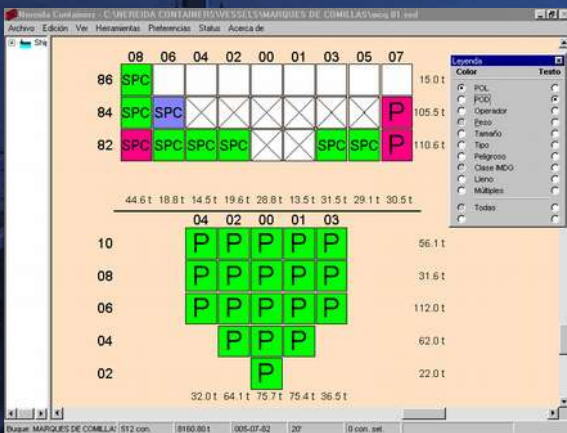


EFFICIENT TRANSMISSION OF INFORMATION

The Electronic Data Interchange (EDI) performs a practically immediate transmission and with total accuracy of the complete bay plan.

SEVERAL VIEWS

NEREIDA Containers offers various types of visualization that can be adapted to the needs of each user.



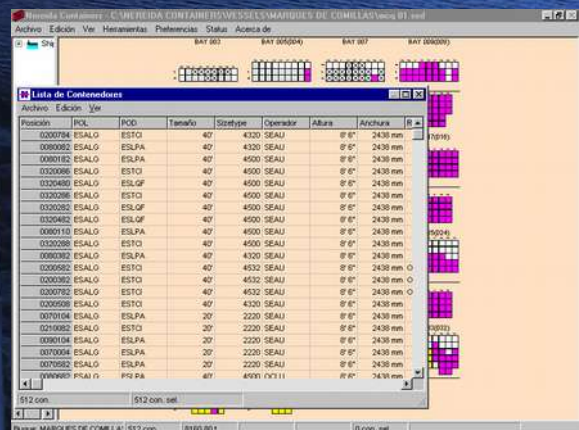
Bay



BayPlan



LetterPlan



Containers list

MAIN FEATURES

- EDIFACT file transfer for communication between the ship and the different companies and terminals via email.
- Wide 'load condition' settings: VGM, POL, POD, place of delivery, operator, registration, weight, IMDG, etc.
- Different display containers colors configurable by the user (POL, POD, OPE...)
- Compatible with BAPLIE, COPRAR and MOVINS files. Updated to the latest version. Also including reading old formats.
- Ability to select multiple containers at once and modify one or more properties simultaneously.
- It allows the possibility to define a new type of container. In addition to selecting standard containers from ISO database in new and old format.
- Provides several container stowage criteria to help you avoid mistakes.
- Large database with IMDG codes embedded.
- Allows to assign each ship to particular traffic line, which only appear ports of the selected line.
- It allows exporting data to other common commercial programs.
- NEREIDA Containers uses all codes indicating by the current international regulations.



NEREIDA Containers Planner.

Basic version. It can work with multiple vessels but it can't change its configuration.

NEREIDA Containers Pro.

Advanced version. Allows to create new vessels and to modify the bay configuration of each vessel.



After sales support

The worldwide network of SEDNI partners, are ready to provide your vessels global support, whenever you need us.



support@sedni.com



C/ Santo Domingo, 3 - L/C 6

03005 Alicante (Spain)

Telf. +34 965 982 193

Fax +34 965 923 065

info@sedni.com

www.sedni.com